

A close-up photograph of the front left corner of a white car. The car's headlight is prominent, featuring a circular design with a glowing yellow ring. Below the headlight, a black tire with a visible tread pattern is shown. The car's body is white and smooth. In the bottom right corner, there is a decorative graphic consisting of a network of white dots connected by thin lines, set against a dark purple background.

Achilles
RADIAL

TYRES YOU CAN TRUST

The Achilles heritage is based on over twenty years of tyre manufacturing and design expertise. Using the latest highly sophisticated computer modelling and fully automated manufacturing technologies Achilles manufacture tyres of extraordinary performance and quality.

OEM TYRE SUPPLIER

Achilles Tyres are supplied to major vehicle manufacturers worldwide. This is a testament to Achilles ongoing commitment to manufacturing quality and design excellence. Achilles Radial, tyres you can trust.

Achilles
RADIAL

ULTRA HIGH PERFORMANCE



ATR SPORT 2



2233



ATR SPORT



868



122



ATR-K ECONOMIST

4X4 AND SUV



DH-HT2



DH-XMT



DH-UHP



DH-AT



DH-HT



DH-MT

MOTORSPORT



838 MT



DH-AP



123S



R1



ATR-K SPORT

LIGHT TRUCK



MULTIVAN



LTR-80



9595



DURAGRIP 2

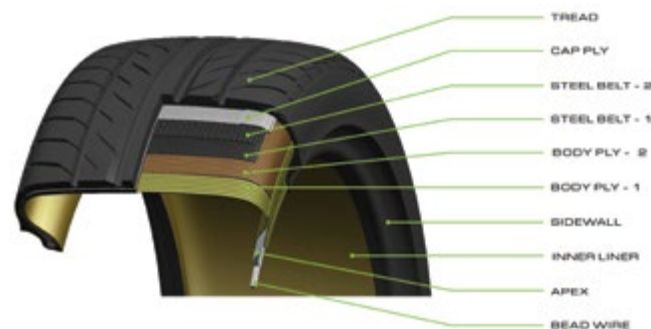


X-GRIP

ATR SPORT 2

The ATR Sport 2 is a high performance tyre integrating a directional pattern with a grippy new compound. Featuring high end design elements including an advanced tread geometry, the ATR Sport 2 offers outstanding tracking and superb wet and dry braking characteristics. The ATR Sport 2 is a thoroughly modern performance tyre designed to complement today's demanding high performance cars.

- A** Directional tread design- provides good traction for wet and dry road conditions
- B** ATRGen.2® (Advanced Technology and Radial 2nd Generation) -superb radial construction
- C** dB Silent Technology® - reduces noise
- D** Four wide circumferential grooves- giving superb water clearance, improved wet traction, reduced hydroplaning
- E** Solid centre rib- delivers straight line stability to improve handling
- F** Interlocking tread block® - enhances directional stability and cornering
- G** α®Technology- enhances cornering performance, assists in water channelling, self cleaning



ATR
SPORT

SIZE	LI	SI	XL
195/50R15	82	V	
195/45R16*	84	V	●
195/50R16	84	V	
225/50R16*	96	V	●
205/55R16	91	V	
225/55R16	99	W	●
245/40R17	95	W	●
255/40R17*	98	W	●
205/45R17	88	W	●
215/45R17	91	W	●
225/45R17	94	W	●
235/45R17	97	W	●
245/45R17	99	V	●
225/50R17	94	W	
215/55R17	98	W	●
225/55R17	97	W	
305/30R18	97	W	
225/35R18	87	W	●
255/35R18	94	W	●
265/35R18	97	W	●
275/35R18*	99	W	●
205/40R18	86	W	●
215/40R18*	89	W	●
225/40R18	92	W	●
235/40R18	95	W	●
245/40R18	97	W	●
275/40R18	99	W	
215/45R18*	93	W	●
225/45R18	95	W	●
235/45R18	98	W	●

*ATR SPORT PATTERN
**Q1 2018

SIZE	LI	SI	XL
245/45R18	100	W	●
225/50R18*	99	W	●
235/50R18	101	V	●
225/55R18	102	W	
265/30R19	93	W	●
275/30R19	96	W	●
215/35R19	85	V	●
235/35R19	91	W	
245/35R19	93	W	●
255/35R19	96	W	●
275/35R19	100	W	●
225/40R19	93	W	●
245/40R19	98	W	●
225/45R19	96	W	●
245/45R19**	102	W	●
215/30R20*	82	W	●
245/30R20	93	W	●
255/30R20	92	W	●
275/30R20	97	W	●
225/35R20	90	W	
245/35R20	97	W	●
255/35R20*	97	W	●
245/50R20	102	W	
295/25R21	96	W	●
245/30R21	95	W	
255/30R21	95	W	●
235/35R21	89	W	
245/35R21	92	W	
275/35R21	103	W	●
295/35R21	103	W	
245/30R22	95	W	●

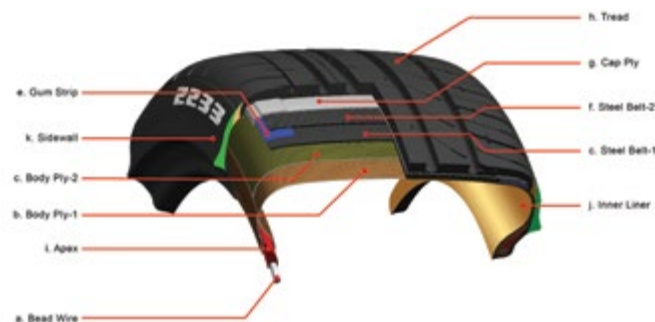
Achilles
RADIAL

2233

TECHNICAL MASTERPIECE

The Achilles 2233 features advanced tread compound technology moulded into an asymmetric design that enhances steering response and precision. Continuous ribs to provide the circumferential tread stiffness to transmit drive, braking forces and help disperse water to resist hydroplaning.

- A** Asymmetrical tread pattern- superb cornering stability and precision steering response
- B** Broad tread shoulder design and wide center rib- maintains excellent straight-line stability
- C** Strong breaker and cap ply material- increased stability at high speeds
- D** Wider rib with water channeling at shoulder- reduces hydroplaning and better grip during wet braking



2233

SIZE	LI	SI	XL
205/45R16	83	W	
205/50R16	91	W	●
215/50R16	94	W	●
185/55R16	83	V	
205/55R16	91	V	
215/55R16	97	W	●
225/55R16	99	W	●
225/60R16	102	H	●
205/40R17	84	W	●
205/45R17	88	W	●
215/45R17	91	W	●
225/45R17	94	W	●
235/45R17	97	W	●
245/45R17	99	W	●
205/50R17	93	W	●
215/50R17	95	W	●
225/50R17	98	W	●
215/55R17	98	W	●
265/35R18	97	W	●
225/40R18	92	W	●
235/40R18	95	W	●
245/40R18	97	W	●
265/30R19	93	W	●
225/35R19	88	W	●
235/35R19	91	W	●
225/30R20	85	W	●
235/30R20	88	W	●

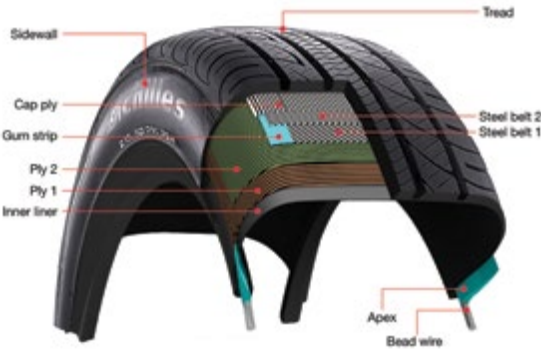
Achilles
RADIAL

STYLE AND SUBSTANCE

The 868 is a new Achilles pattern designed to complement today's modern sedan and cross-over vehicles. With an advanced tread pattern that is optimised to deliver superb handling characteristics in wet and dry conditions the 868 will give your car a safe and confident drive.

868

- A Large Shoulder Block – Provides strength and stiffness for outstanding handling during cornering.
- B Four Wide Circumference Grooves – Superb water channeling, improves wet traction and reduces hydroplaning.
- C All Season Sipes – Enhances traction on wet surfaces.
- D Asymetrical Tread Pattern – Superb cornering stability and precision steering responses.
- E Environmentally Friendly
- G HD Silica Technology – Improves fuel efficiency and wet traction.
- H Improved Mileage



868

SIZE	LI	SI	XL
165/70R13**	79	T	
175/70R13**	82	T	
185/60R14	82	H	
195/60R14**	86H		
185/65R14	86	H	
175/70R14**	84	T	
185/70R14	88	H	
195/55R15	85	V	
195/60R15	88	H	
205/60R15**	91	H	
195/65R15	91	H	
205/65R15	94	H	
215/65R15**	96	H	
205/70R15**	96	H	
215/70R15**	98	H	
205/45R16**	87	W	●
205/50R16	87	V	
225/50R16**	92	V	
205/55R16	91	V	
225/55R16	99	V	●
205/60R16**	92	H	
235/60R16	100	V	
235/65R16**	103	V	

**Q1 2018

SIZE	LI	SI	XL
205/40R17	84	W	●
215/40R17**	87	W	●
245/40R17**	91	W	
215/45R17	91	W	●
225/45R17	94	W	●
235/45R17	97	W	●
245/45R17**	99	W	●
205/50R17	93	V	●
215/50R17	95	V	●
225/50R17	98	V	●
235/50R17**	96	W	
225/55R17	101	V	●
235/55R17	103	V	●
215/60R17**	96	H	
225/60R17**	99	V	
225/40R18**	92	W	●
235/40R18**	95	W	●
245/40R18**	91	W	
225/45R18	95	W	●
245/45R18**	100	W	●
235/55R18	104	V	●
235/60R18**	103	V	

THE NEW STANDARD

The Achilles 122 is a low profile passenger tyre designed to give excellent grip and be safe in wet and dry conditions. The 122 features advanced design and construction for a safe and enjoyable driving experience.

122

- A Multi-Sipes Design- to avoid hydroplaning on wet road conditions
- B Stiffer tread area- for straight-line tracking, improves high-speed stability and dry braking
- C Water channeling to the center rib-optimizes water evacuation and improves contact area while reducing hydroplaning



SIZE	LI	SI
165/60R13	73	H
175/60R13	77	H
185/60R13	80	H
165/65R13	77	T
155/70R13	75	T
165/70R13	79	H
175/70R13	82	H
185/70R13	86	H
145/80R13	75	T
155/80R13	79	T
165/80R13	83	H
185/60R14	82	H
205/60R14	88	H
175/65R14	82	H
185/65R14	86	H
175/70R14	84	H
185/70R14	88	H
195/70R14	91	H
185/55R15	82	H
195/55R15	85	V

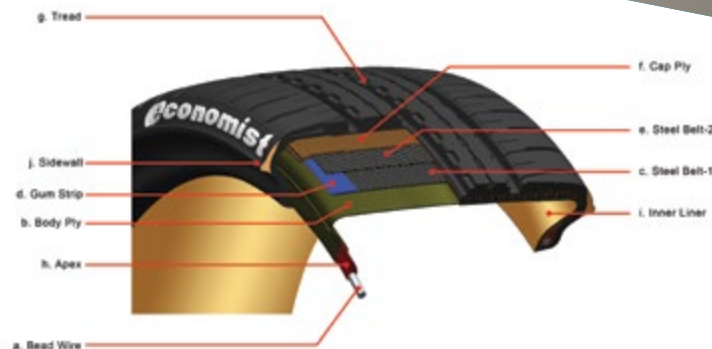
SIZE	LI	SI
175/60R15	81	H
185/60R15	84	H
195/60R15	88	H
205/60R15	91	H
175/65R15	84	T
185/65R15	88	H
195/65R15	91	H
205/65R15	94	H
205/70R15	96	H
215/70R15	98	H
195/50R16	84	V
195/55R16	87	H
205/60R16	92	H
215/60R16	95	H
225/60R16	98	H
205/65R16	95	H
215/65R16	98	H
215/70R16	100	H
225/60R17	99	H

ATR SPORT-K ECONOMIST

PERFORMANCE MULTIPLIED

Tread shoulder uses a high-stiffness curved pattern design to increase the cornering strength and to enhance the steering ability. In addition, two straight broad grooves have been used in the design, and sipe bars added in the middle groove for better drainage efficiency and driving safety on wet roads.

- A** Inside offset twin rib- Smooth response and stability for excellent traction and braking
- B** Two straight broad grooves enhance driving safely on wet roads and reduce the possibility of hydroplaning
- C** Shoulder block with multiple edges and additional sipes for better grip, braking, handling, comfort and noise improvement



ATR
SPORT-K
ECONOMIST

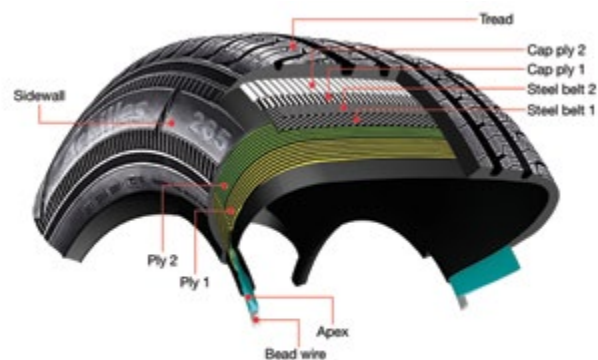
SIZE	LI	SI	XL
165/50R14	75	V	●
155/55R14	75	H	●
165/55R14	75	V	●
155/65R14	75	H	
165/45R15	75	V	●
165/50R15	75	V	●
185/50R15	79	V	
165/55R15	75	H	
175/55R15	77	V	
155/60R15	75	H	●
165/40R16	75	V	●
165/45R16	74	V	●
165/50R16	77	V	●
165/40R17	85	V	●
195/40R17	81	V	●
165/45R17	85	V	●
195/45R17	85	W	●
175/55R17	88	V	●
205/35R18	88	W	●
165/40R18	85	V	●
175/45R18	88	W	●

DH HT2

HIGHWAY REDEFINED

The all new Achilles Desert Hawk HT-2 is designed from the ground up to excel in all road conditions. A newly developed tread pattern and a unique HD Silica compound ensure maximum grip and the lowest possible road noise. Exceptional performance for today's SUV vehicles.

- A** Large Shoulder Block – Provides strength and stiffness for outstanding handling during cornering.
- B** Four Wide Circumference Grooves – Superb water channeling, improves wet traction and reduces hydroplaning.
- C** Solid Centre Rib – Delivers straight line stability to improve handling.
- D** Interlocking Tread Block – Enhances directional stability and cornering performance.
- E** HD Silica Technology – Improves fuel efficiency and wet traction.
- F** Low noise
- G** Non directional



SIZE	LI	SI	XL
235/60R16**	100	H	
235/60R16**	100	H	
215/65R16**	98	S	
215/70R16	100	H	
225/70R16**	107	H	●
235/70R16	109	H	●
245/70R16**	111	H	●
255/70R16**	111	H	
265/70R16**	112	H	
275/70R16**	114	H	
215/60R17**	96	H	
235/60R17**	102	H	
255/60R17**	110	H	●
225/65R17	102	H	
235/65R17**	108	H	●
245/65R17**	111	H	●
265/65R17	112	H	
245/70R17**	110	H	
265/70R17**	115	H	
235/50R18**	101	V	●
225/55R18**	98	V	
235/55R18	104	H	●
255/55R18**	109	H	●
225/60R18**	104	H	●
235/60R18**	107	H	●
265/60R18**	114	H	●
255/50R19**	107	H	●
235/55R19**	105	H	●
275/55R20**	117	H	●

**Q1 2018

DH HT

KING OF THE HIGHWAY

The Desert Hawk HT incorporates environmentally friendly ECO-safe™ technology which reduces rolling resistance, lowers fuel consumption and improves wet weather grip.

- A** Staggered tread block design- provides superior traction for all season performance
- B** Wide & deep tread grooves- enhances resistance to hydroplaning for comfort and safety, excellent for traction in on/off road terrain
- C** Two wide grooves- optimize handling on wet surfaces and disperse water efficiently to improve grip and stability



DH
HT

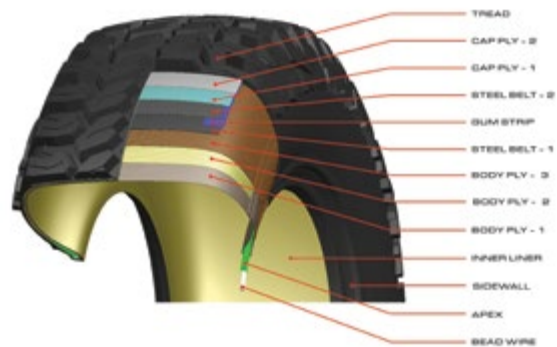
SIZE	LI	SI	XL
235/60R16	100	H	
225/70R16	107	H	●
235/70R16	109	H	●
245/70R16	111	H	●
245/70R16	111	H	
255/70R16	111	H	
265/70R16	112	H	
275/70R16	114	H	
215/60R17	96	H	
235/60R17	106	T	
235/60R17	102	H	
275/60R17	110	H	
235/65R17	108	H	●
245/65R17	111	H	●
245/70R17	110	H	
265/70R17	115	H	
265/70R17	115	H	
225/55R18	98	V	
255/55R18	109	H	●
235/60R18	107	V	●
235/60R18	107	H	●
255/50R19	107	H	●
215/70R16C	108/106	T	

DH X-MT

EXTREME OFF-ROAD

The incredible new XMT 'Extreme Mud Terrain' tyre is a super-aggressive off road tyre featuring incredibly rigid high load construction and a unique block design. Side blocks and a self cleaning pattern show that the XMT means business. An amazing new tyre for off-road enthusiasts and anyone wanting the ultimate off-road performance.

- A** Aggressive tread pattern- high grip performance and durability, maximizes traction and braking performance
- B** X-Protection Sidewall Design®-provides sidewall protection from sharp cuts and rock, high resistance to damage, and additional traction from sidewall
- C** Aggressive 3 steps block®- provides better traction for all terrain performance, minimizes moving angle of tread blocks during cornering
- D** 3 Ply Construction- superior tyre construction makes tyre highly resistant to damage



3 STEPS BLOCK DESIGN
Provides better traction on all terrain by minimising the moving angle of tread blocks during cornering. Grip and stability are maximised regardless of terrain.



X PROTECT SIDEWALL
Exceptional sidewall grip and lateral protection from this unique sidewall design that incorporates rigid blocks across the edge of the tyre and sidewall.

DH X-MT

SIZE	LI	SI	XL
27X8.5R14	101	Q	
27X8.5R15	95	Q	
30X9.5R15	104	Q	
31X10.5R15	109	Q	
31X10.5R15	109	Q	
32X11.5R15	113	Q	
33X12.5R15	112	Q	
33X12.5R15	112	Q	
235/75R15	109	Q	●
245/70R16	111	Q	●
265/70R16	116	Q	
305/70R16	124/121	Q	
225/75R16	115	Q	
265/75R16	123/121	Q	
285/75R16	126/123	Q	
235/85R16	120/116	L	
37X12.5R17	124	Q	
265/65R17	120/117	Q	
265/70R17	118/115	Q	
285/70R17	121/118	Q	
305/70R17	119/116	Q	
265/60R18	112	Q	
285/60R18	118/115	Q	
33X12.5R20	114	Q	
35X12.5R20	121	Q	
265/50R20	111	Q	
285/50R20**	119/116	Q	

**Q1 2018

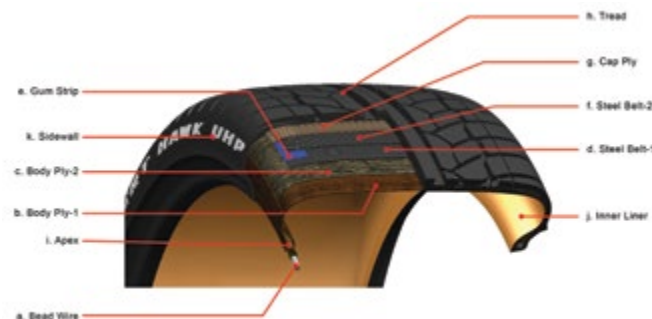
Achilles
RADIAL

DH UHP

HIGHWAY LUXURY

The Achilles Desert Hawk UHP is a street/sport utility vehicle tyre that provides the highest level of wet and dry traction for luxury sport utility vehicles.

- A** Directional Tread Design- provides good traction for both wet and dry condition
- B** Solid Center Rib- delivers straight line stability to improve handling
- C** Rim guide protection- provides excellent wheel damage protection
- D** Double wide circumferential grooves with multiple lateral grooves channel water to reduce the possibility of hydroplaning
- E** High Disperse Silica Compound- excellent handling for wet road conditions, excellent low rolling resistance and lower fuel consumption



DH
UHP

SIZE	LI	SI	XL
235/55R18	104	H	●
255/55R18	109	V	●
275/45R19	108	V	●
255/50R19	107	V	●
235/55R19	105	V	●
245/55R19	103	V	
315/35R20	110	V	●
245/40R20	99	V	●
275/40R20	106	V	●
245/45R20	99	V	
255/45R20	105	V	●
275/45R20	110	V	●
265/50R20	112	V	●
265/50R20	107	V	
285/50R20	112	V	
275/55R20	117	V	●
265/40R21	105	V	●
265/35R22	106	V	●
285/35R22	112	V	●
285/40R22	110	V	●
305/40R22	114	V	●
285/45R22	114	V	●
305/45R22	118	V	●
305/35R24	112	V	●

DH AT

The Achilles Desert Hawk AT is a classic all terrain tyre designed from the ground up to enhance the ride, handling and performance of today's new breed of 4x4 and SUV vehicles. Excellent performance both on and off road make the Desert Hawk AT the perfect all rounder.

- A** Staggered tread block design- provides superior traction for all season performance
- B** Wide & deep tread grooves- enhances resistance to hydroplaning for comfort and safety, excellent for traction in on/off road terrain
- C** Two wide grooves- optimize handling on wet surfaces and disperse water efficiently to improve grip and stability



DH-AT

SIZE	LI	SI	XL
30X9.5R15	104	S	
31X10.5R15	109	S	
235/70R15	103	S	
235/70R15	103	S	
215/75R15	100	S	
235/75R15	109	S	●
215/70R16	100	S	
235/70R16	106	S	
245/70R16	111	H	●
265/70R16	112	S	
265/75R16	116	S	
175/80R16	91	S	
205/80R16	110	H	●
225/65R17	102	S	
265/65R17	112	S	
255/55R18	109	S	●
255/60R18	112	S	●
255/50R19	107	S	●
275/40R20	111	S	●
275/45R20	110	Q	●
265/50R20	111	Q	●

Achilles
RADIAL

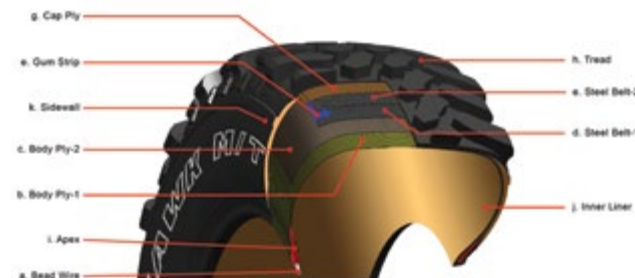
DH-MT

THE TRAILBLAZER

Featuring a super-aggressive tread pattern and a unique side block design the Desert Hawk MT provides astonishing levels of grip on rough, broken terrain. Specially engineered compound provides excellent endurance and tyre life.

- A** Dual stage shoulder lugs- provide self cleaning
- B** Independent blocks- provides excellent off-road performance
- C** Special formulated compound- maximizes off-road performance and mileage

SIZE	LI	SI
31X10.5R15	109	Q
245/75R16	108/106	Q



DH
MT

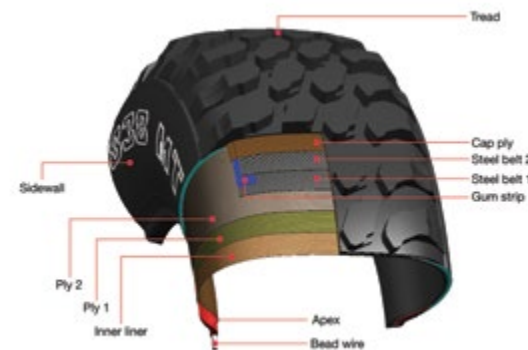
838MT

GO ANYWHERE

The Achilles 838-MT is an affordable off road tyre produced with quality materials. It has excellent mileage durability which will satisfy the off roader's needs.

- A** Unique block design provides superfine traction and mud clearing from grooves
- B** Special compound formulation maximises off road performance and traction
- C** Double steel belt construction provides better durability with additional puncture resistance

SIZE	LI	SI
27X8.5R14	101	Q
235/70R16	104/101	Q
265/75R16	112/109	Q



838
MT

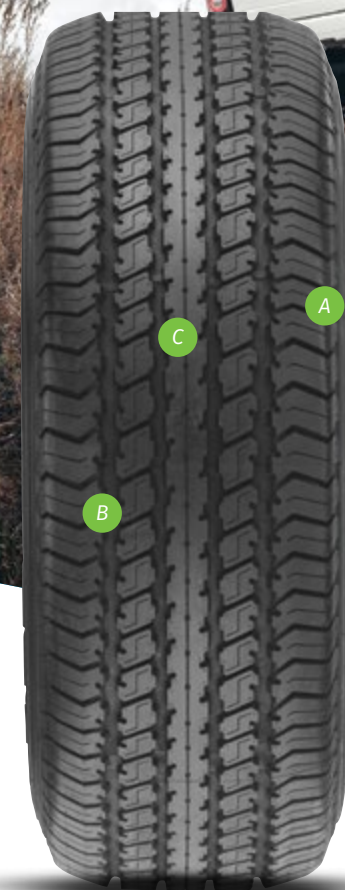
DH AP

ALL PURPOSE PERFECTION

Desert Hawk AP is a Highway all-purpose tyre that provides the highway luxury necessary to tame utility vehicles for the road. Whether in town or travelling interstate, Desert Hawk AP tyres are designed to bring the qualities of passenger car comfort and a quiet ride to sport utility vehicles and light trucks, while providing year-round traction.

- A** Dual stage shoulder lugs- provide self cleaning
- B** Independent blocks- provides excellent off-road performance
- C** Special formulated compound- maximizes off-road performance and mileage

SIZE	LI	SI
225/75R16	115/112	L
245/75R16	120/116	R
215/85R16	115/112	L
235/85R16	120/116	L



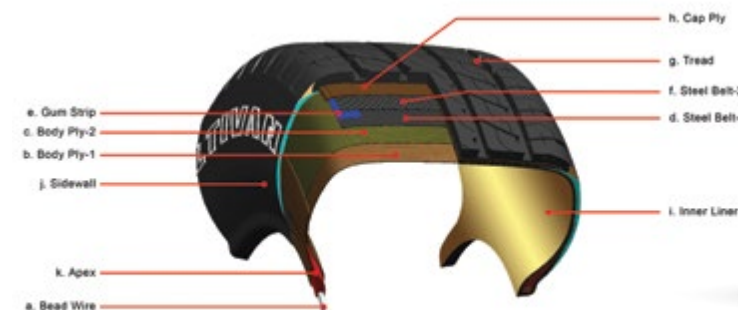
MULTIVAN

MULTI
PURPOSE

The Achilles Multivan is a sensational new light truck tyre pattern designed from the ground up to provide the advantages of a light truck tyre including extreme wear resistance and the handling characteristics of a performance passenger tyre. The Multivan is the perfect solution for modern trade vehicles.

- A** Four straight groove pattern designs- increase water channeling
- B** Broad tread design- enhances longevity of tyre life and traction
- C** Evenly distributed sipes- Reduces heat generation and pattern noise

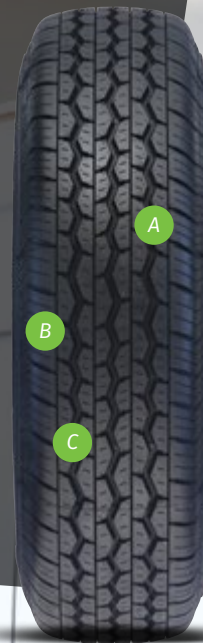
SIZE	LI	SI
195/70R15C	104/102	T
205/70R15C	106/104	T
215/70R15C	109/107	T
225/70R15C	112/110	T
235/75R15C	110/107	S
215/60R16C	108/106	Q
225/60R16C	105/103	T
195/65R16C	104/102	T
205/65R16C	107/105	T
225/65R16C	112/110	T
235/65R16C	115/113	T
205/75R16C	113/111	T
215/75R16C	116/114	T
215/60R17C	109/107	Q



LTR-80

- A** Dual stage shoulder lugs- provide self cleaning
- B** Independent blocks- provides excellent off-road performance
- C** Special formulated compound- maximizes off-road performance and mileage

SIZE	LI	SI
185R14C	102/100	Q
195R14C	106/104	Q
195R15C	106/104	Q



9595

- A** Dual stage shoulder lugs- provide self cleaning
- B** Independent blocks- provides excellent off-road performance
- C** Special formulated compound- maximizes off-road performance and mileage

SIZE	LI	SI
205/75R14C	109/107	S
205/75R15C	103/100	S



DURAGRIP-II

- A** Dual stage shoulder lugs- provide self cleaning
- B** Independent blocks- provides excellent off-road performance
- C** Special formulated compound- maximizes off-road performance and mileage

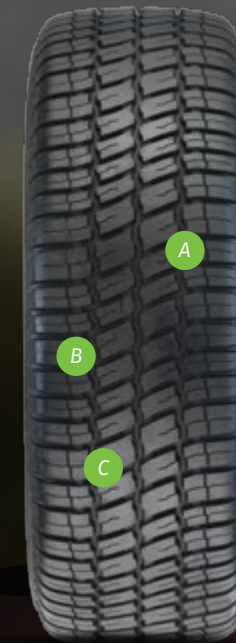
SIZE	LI	SI
165R13C	95/93	Q



X-GRIP

- A** Dual stage shoulder lugs- provide self cleaning
- B** Independent blocks- provides excellent off-road performance
- C** Special formulated compound- maximizes off-road performance and mileage

SIZE	LI	SI
205/65R15C	102/100	R



ACHILLES MOTORSPORT



123S



R1



ATRK SPORT

Achilles is proud to support Australian motosport including the 2015 Australian Drift Grand Prix and Drift AllStars series, as well as sponsoring a number of local drivers. Achilles manufactures a wide range of performance and 4x4/SUV tyres based on race proven Achilles track technology.

Achilles
RADIAL



DISTRIBUTED BY

YHI AUSTRALIA

SYDNEY
8 PENELOPE CRESCENT
ARNDELL PARK NSW 2148
PHONE: (02) 8822 7600

BRISBANE
141 BOUNDARY ROAD
OXLEY QLD 4075
PHONE: (07) 3379 7188

ADELAIDE
8 SCHENKER DRIVE
ROYAL PARK SA 5014
PHONE: (08) 8343 9100

PERTH
37 HECTOR STREET
OSBORNE PARK WA 6017
PHONE: (08) 9204 3400

MELBOURNE
46-50 EDISON ROAD
DANDENONG STH VIC 3175
PHONE: (03) 9700 9300

TOWNSVILLE
797 INGHAM ROAD
BOHLE QLD 4818
PHONE: (07) 3379 7188

LAUNCESTON
46 GARFIELD STREET
SOUTH LAUNCESTON TAS 7250
PHONE: (03) 6344 7794

EMAIL ENQUIRIES
INFO@WHEELDEMON.COM.AU



COPYRIGHT ©2017 YHI (AUSTRALIA) PTY LTD. ALL RIGHTS RESERVED. REPRODUCTION WITHOUT PERMISSION PROHIBITED. SPECIFICATIONS SUBJECT TO CHANGE WITHOUT NOTICE. TYRES TO BE FITTED BY TRAINED TYRE FITTER ONLY. IMAGES ARE FOR ILLUSTRATIVE PURPOSES ONLY.
YHI (AUSTRALIA) PTY LTD ABN: 92 058 091 375